

1955

MALONEY BROS. Nursery Co. Inc.
DANSVILLE, NEW YORK

The **BEST** in
GIANT Flowering
TULIPS from HOLLAND

Price: 10 for \$1.20; 25 for \$2.75
 50 for \$4.95; 100 for \$9.00
 ALL POSTPAID

VARIETIES AS ILLUSTRATED

- | | |
|---------------------------|-------------------------------|
| ① 5100 PRINCESS ELIZABETH | ④ 5103 GLACIER |
| ② 5101 MRS. SCHEEPERS | ⑤ 5104 RED MASTER |
| ③ 5102 LAVENDER QUEEN | ⑥ 5105 BLUE EAGLE |
| | ⑦ 5106 PRINCESS MARGARET ROSE |
| | ⑧ 5107 DILLENBURG |

Tulips Not Illustrated

- 5108 LA TULIP NOIRE. The jet black Tulip, very striking.
- 5109 UTOPIA. Brilliant cherry-red; iridescent color.
- 5110 SMILING QUEEN. Pure, radiant satin-rose.
- 5111 GOLDEN HARVEST. Splendid large lemon-yellow.
- 5112 INSURPASSABLE. A gigantic lilac Tulip of great substance.
- 5114 CORDELL HULL. Blood-red, striped white. Striking.
- 5115 THE PEACH. Brilliant peach color, lighter edge.
- 5116 CAMPFIRE. A blazing fire-red.

5117 TULIPS IN MIXTURE

For a full range of colors we have arranged with our growers in Holland a special mixture of all shades. The many colors, together with various shaped flowers are sure to make a grand showing. Low prices are quoted so you may plant liberally. All bulbs are top size and of highest quality.

PRICE:

25 bulbs for . . \$2.45
 50 bulbs for . . 4.45
 100 bulbs for . . 7.95
 All Postpaid

Enjoy the beautiful color of these large flowering, imported Tulips. Once planted they will grow and multiply for many years. For next spring's flowers don't fail to plant this fall. All bulbs are shipped postpaid at proper planting time for your locality.

For FREE GIFTS
See Page 15

LIBRARY
 RECEIVED
 AUG 21 1955
 U.S. Department of Agriculture





For Colorful Grandeur-
IN THE EARLY SPRING GARDEN
PLANT THESE
Flowering Bulbs!

For **FREE GIFTS**
 See Page 15

5151
NATURALIZING DAFFODILS

Treat your home to a careful blending of the most beautiful and graceful Daffodils. Thrill to masses of bloom that add fragrance and charm. Bulbs increase year after year, bringing more color each successive spring. Plant freely at these special prices. **PRICE:** 25 for \$1.75; 50 for \$3.25; 100 for \$5.95; 500 for \$27.50, postpaid.

5150 KING
ALFRED DAFFODIL

When poets write of yellow Daffodils they have King Alfred in mind. Majestic perfection, long lasting, immense size. Superb for exhibition. A "must" for your garden.

Please Order
 by Catalog
 Number



King Alfred Daffodil

PRICE: 10 for \$1.65; 25 for \$3.45; 50 for \$6.45; 100 for \$12.00, postpaid.

The
Amazing
RED
EMPEROR
 See
 page 16



The Famous
Black Parrot Tulip

PARROT TULIPS OF DISTINCTION

The irregularly formed, fringed petals of Parrot Tulips are most unusual and decidedly different. Their popularity is increasing each year for they are the most interesting plants you can grow.

5121 BLACK PARROT. Rare and unique purple-black feathered flowers.

5122 THERESE. Cherry-scarlet with beautifully crinkled petals.

5123 FANTASY. Fantastic feather-pink petals shaded with red and green stripings.

PRICE: 10 for \$1.55; 25 for \$2.95; 50 for \$4.95; 100 for \$9.50, postpaid.



HOW
 TO
 ORDER
 See
 Page
 15

Eros—A picture in Double Flowering Tulips

DOUBLE TULIPS—Blossoms like Peonies

The large, full, Peony-like flowers make a most colorful display wherever grown. The massive, double blooms are held erect on sturdy 16-20 in. stems. Exquisite Tulips of striking beauty.

5118 EROS. Immense tones of brilliant rose, sweet scented flowers of good substance and a glowing, showy color.

5119 ROCKET. Striking bright cherry-red, very double form, vigorous grower. Flowers are most attractive creating an outstanding display.

5120 UNCLE TOM. A deep mahogany-red. Very popular. Plant in groups of twelve for unusual effects in your garden.

PRICE: 10 for \$1.55; 25 for \$2.95; 50 for \$4.95; 100 for \$9.50, postpaid.

You Can
RELY
 on
Maloney's

For
FREE
GIFTS
 See Page
 15



5160 CROCUS—Blooms right after Snow

A choice assortment including giant yellows, blues, whites, and bi-colors of all types which are ideal for planting in beds, borders, around evergreens, or as edging; excellent for cutting too. You will be amazed at the display at so little cost. **PRICE:** 25 for \$1.45; 50 for \$2.75; 100 for \$4.95, postpaid.

HYACINTHS

Among the many flowers that can be grown from fall planted bulbs, Hyacinths stand at the top of the list. Large spikes that are exceedingly attractive and so admired.

5164 PRINCESS MARGARET. Bright, clear pink, well filled spikes.

5165 IVANHOE. Unusually large, compact trusses of the darkest blue. Highly recommended.

5166 JAN BOS. Strong stemmed trusses of carmine-red. Large bulbs; the best of its color; always admired.

5167 L'INNOCENCE. Pure white, large truss; extra fine large bulbs, very handsome.

PRICE: Single bedding varieties, 5 for \$1.15; 10 for \$2.00; 25 for \$4.75, postpaid.



Maloney's Garden Aristocrats



1840—GOLDEN PRIVET

(*Ligustrum Vickary*)

A lovely golden leaf form of Privet. Very colorful in evergreen or shrub plantings. Can be trimmed any size or shape you wish. **PRICE:** 12-15 in., \$1.00 each; 2 for \$1.80, postpaid.



Crimson Pygmy BARBERRY

1802—(*Berberis Sp.*)

A charming dwarf form of brilliant Barberry that doesn't grow over 6-8 inches high. The leaves are a fire-engine-red but the new growth is even brighter. This is the gem of dwarf plants to sparkle midst an evergreen border or shine as a solitaire. To obtain the most brilliant shades, grow in full sun. **PRICE:** Strong plants, \$2.00 each; 3 for \$5.50.

Please Order by Catalog Number

Free Gifts and How to Order
See Page 15



Indian Sunset The Ever Popular BITTERSWEET

(*Celastrus Scandens*)

2405—The orange-crimson fruits are used for winter decoration. Leaves are glossy green. **PRICE:** \$1.00 each; 3 for \$2.85, postpaid.



Cardinal Shrub (*Weigela Vaniceki*)

1845—New. Trumpet-shaped rosy red flowers covering the bush from top to bottom in May and June continuing to blossom until frost. Does well in any soil and in full sun or part shade. 5-6 feet at maturity. **PRICE:** 2-yr., blooming size plants, 18-24 in., \$1.25 each; 2 for \$2.35, postpaid.

New Seedless MORaine LOCUST

FAST GROWING—LONG LIVED—SEEDLESS

2516—This beautiful new form of Locust, which is almost entirely free from thorns, is a vigorous and rapid grower. It will create light, airy shade quickly with its canopy of lace-like foliage. Free from insect pests. It is a hardy tree—grows on most every kind of soil. It looks somewhat like American Elm in its graceful beauty. It is a clean tree with no unsightly seeds on your lawn. We recommend it to you highly. **PRICE:** 5-6 ft., \$5.95 each.

New CRIMSON KING MAPLE

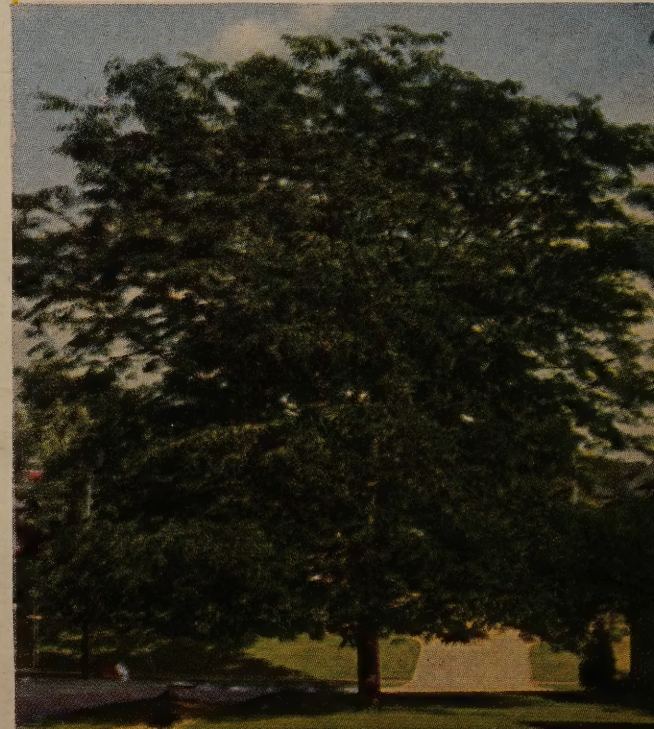
2517—Red Leaf, truly the King of all Maple trees. A maroon or red-leaved tree which originated in Europe. After being observed for ten or more years it has proven in every instance to maintain its gorgeous red color all through the season. Its rounded, compact top makes it the best of all red leaf shade trees. We recommend it without reservation. Maturity height 50 ft. Pat. No. 735. **PRICE:** 4-5 ft., \$4.95 each.



1816 PINK DEUTZIA

(*Deutzia Gracilis Rosea*)

This lovely plant is the prettiest and most graceful of all the Deutzias. It seldom grows over 2-3 feet high and makes a fountain-like bush that is attractive both winter and summer. In late May there is a superabundance of delicate pink flowers which cover the entire plant. It does well in sun or light shade and is excellent for edging walks or in foreground of foundation plantings. **PRICE:** 12-15 in., \$1.45 each, postpaid.



MALONEY'S SHRUBS

Big Color Magic for Your Garden at BUDGET PRICES!



1841 FLOWERING ALMOND

(*Prunus Amygdalus*)

Rose colored blossoms resembling small Roses. 4 feet at maturity. May. **PRICE:** 2-yr., blooming size plants, 18-24 in., \$1.00 each; 2 for \$1.80. 2-3 ft., \$1.25 each; 2 for \$2.30, postpaid.



1810 HARDY HOLLY

(*Ilex Verticillata*)

An unusually fine deciduous plant having attractive green foliage followed by highly ornamental red berries in fall. A beautiful plant to blend with evergreens or use as a shrub border. Prefers moist, acid soil. Does well in northern exposure, hardy everywhere. Do not confuse with Christmas Holly. **PRICE:** 18-24 in., \$1.50 each, postpaid.

For Free Gifts
See Page 15

Plant This Fall for
Giant Blooms
Next Spring
"Save A Year"

Money Saving Collection K

Fine Flowering Shrubs

- 1 Red Twigged Dogwood
 - 1 Coralberry
 - 1 Purple Lilac
- 18-24 in., 2-yr. blooming size, 3 for \$2.45, postpaid.



1828 PURPLE LILAC

(*Syringa Vulgaris*)

Most common of Lilacs, a real old-fashioned favorite. Perfumed flowers in May. 10 feet at maturity. **PRICE:** 18-24 in., \$1.00 each; 2 for \$1.80. 2-3 ft., \$1.25 each; 2 for \$2.30, postpaid.



1812 CORALBERRY

(*Symphoricarpos Chenaulti*)

Pink flowers followed by coral-red berries which hang like pendent jewels upon a regal background. Very hardy and vigorous. 3-4 feet at maturity. **PRICE:** 2-yr., blooming size plants, 18-24 in., \$1.00 each; 2 for \$1.80. 2-3 ft., \$1.25 each; 2 for \$2.30, postpaid.



1811 FORSYTHIA, "SPRING GLORY"

New. A brilliant new Forsythia which is really a magnificent sight to behold when mature and in full bloom—branches completely covered with larger than average flowers. Canes grow erect with gracefully drooping tips giving the effect of a giant sunburst. Very hardy in all sections of the country and thrives and grows vigorously in all soil. 6-8 feet at maturity. **PRICE:** 2-yr., blooming size plants, 18-24 in., \$1.00 each; 2 for \$1.80. 2-3 ft., \$1.25 each; 2 for \$2.30, postpaid.



1818 DOUBLE FLOWERED KERRIA

(*Kerria Japonica Pleniflora*)

Double, golden yellow, rose-like blossoms all summer. Branches remain emerald-green all winter to liven the landscape. Vibrant the year around, thrive everywhere. Maturity height 4-5 feet. **PRICE:** 2-yr., blooming size plants, 18-24 in., \$1.35 each; 2 for \$2.60. 2-3 ft., \$1.65 each; 2 for \$3.20, postpaid.



1844 TAMARIX AFRICANA

Pink flowers, graceful filmy foliage. Blooms early. 4-5 ft. at maturity. **PRICE:** 18-24 in., \$1.00 each; 2 for \$1.80. 2-3 ft., \$1.25 each; 2 for \$2.30, postpaid.



1815 VAN HOUTTE SPIREA

(*Spiraea Van Houttei*)

Completely covered with thousands of pure white blossoms that gracefully cascade into a fountainous effect. Most popular Spirea. Excellent for hedges. 6-8 feet at maturity. **PRICE:** 2-year., blooming size plants, 18-24 in., 85c each; 3 for \$2.40; 10 for \$7.50. 2-3 ft., 95c each; 3 for \$2.70; 10 for \$8.50, postpaid.



1817 VARIEGATED WEIGELA

(*Weigela Rosea Nana Variegata*)

Fine dwarf shrub. Silvery variegated leaves. Flowers rose with white eye. 4-5 feet at maturity. July. **PRICE:** 2-yr., blooming size plants, 15-18 in., \$1.00 each; 2 for \$1.80. 18-24 in., \$1.25 each; 2 for \$2.30, postpaid.



1821 TARTARIAN HONEYSUCKLE

(*Lonicera Tatarica Rubra*)

A very rapid grower. Makes a wonderful showing the first year. In May and June conspicuous with a mass of spangled pink flowers, followed by a multitude of scarlet berries and lively green foliage. 6-8 feet at maturity. Often used for hedging. **PRICE:** 2-yr., blooming size plants, 18-24 in., \$1.00 each; 2 for \$1.80. 2-3 ft., \$1.25 each; 2 for \$2.30, postpaid.

Make Your Home Complete! - Use
ORNAMENTAL SHRUBS

**HARDY,
COLORFUL,
LONG-
LIVED**



1837 HILLS OF SNOW
(Hydrangea A. G.)

Blooms very large, pure snow-white in July and August. 4-5 ft. at maturity. **PRICE: 2-yr., blooming size plants, 18-24 in., \$1.00 each; 2 for \$1.80. 2-3 ft., \$1.25 each; 2 for \$2.30, postpaid.**



1826 SPIREA ANTHONY WATERER

Broad, flat heads of red flowers in profusion all summer. Particularly good as a border plant in flowering shrub beds. 3 ft. at maturity. June-July. **PRICE: 15-18 in., \$1.00 each; 2 for \$1.80. 18-24 in., \$1.25 each; 2 for \$2.30, postpaid.**



1820 SNOWBERRY
(Symphoricarpos racemosus)

Strikingly beautiful shrub whose waxy white fruit following pink flowers closely resembles Snowballs. The fruit hangs in tiny clusters nodding a welcome invitation to our feathered friends well into the winter. Unusually attractive, hardy and grows everywhere. Maturity height 4-5 ft. **PRICE: 2-yr., blooming size plants, 18-24 in., \$1.00 each; 2 for \$1.80. 2-3 ft., \$1.25 each; 2 for \$2.30, postpaid.**



1825 HYBRID PINK SPIREA
(Spirea Macrothyrsa)

Without doubt the finest pink Spirea ever introduced. Enormous spikes of cameo-pink flowers up to 12 inches long. Clusters of secondary spikes follow after cutting, and by trimming out the old flowers the plant can be made to bloom until late September. **PRICE: 2-yr., blooming size plants, 18-24 in., \$1.00 each; 3 for \$2.70. 2-3 ft., \$1.25 each; 3 for \$3.45, postpaid.**



1809 DOUBLE MOCK ORANGE

(Philadelphus "Enchantment")

Supply your own bridal bouquet from this beautiful, sweet scented shrub that is smothered with large, pure white flowers from the ground up in June. Succeeds everywhere. Maturity height 6-8 ft. **PRICE: 2-yr., blooming size plants, 18-24 in., \$1.35 each. 2-3 ft., \$1.60 each, postpaid.**

1819 RED JAPANESE QUINCE

(Cydonia Japonica)

Early in the spring this delightful shrub is especially brilliant blanketed with dazzling scarlet flowers, followed by dark green, glossy foliage. Very desirable for single specimens or hedges and the fragrant blossoms are ideal for cutting. Truly a versatile favorite and a "must" for your garden. Maturity height 3-4 ft. **PRICE: 2-yr., blooming size plants, 15-18 in., 90c each; 2 for \$1.70. 18-24 in., \$1.00 each; 2 for \$1.80, postpaid.**



**For Free Gifts
See Page 15**



1842 PINK PUSSY WILLOW

A fine cultivated French variety with dainty silvery pink flowers every winter. An attractive shrub in summer which can be used for tall screens or background. Large catkins of silver-pink from 1 to 2 inches long. Maturity height 10 ft. **PRICE: 18-24 in., \$1.25 each; 2 for \$2.30, postpaid.**

**PLEASE ORDER
BY CATALOG NUMBER**

1846 GOLDEN SYRINGA
(Philadelphus Aureus)

Yellow foliage, white flowers. Very sweetly scented. 3-5 ft. at maturity. May. **PRICE: 2-yr., No. 1 plants, \$1.75 each; 2 for \$3.30, postpaid.**



1830 DEUTZIA, PRIDE OF ROCHESTER

(Deutzia Scabra Candidissima) Best known variety. Flowers large and free, double white. May. 6-8 ft. at maturity. **PRICE: 2-yr., blooming size plants, 18-24 in., \$1.00 each; 2 for \$1.80. 2-3 ft., \$1.25 each; 2 for \$2.30, postpaid.**



1833 RED TWIG DOGWOOD
(Cornus Stolonifera)

White flowers followed by white berries. In winter the branches are vivid red. **PRICE: 18-24 in., \$1.00 each; 2 for \$1.80. 2-3 ft., \$1.25 each; 2 for \$2.30, postpaid.**



1824 RED-LEAVED BARBERRY

(Berberis Thunbergii Atropurpurea)

Foliage rich bronzy red. Brilliant throughout summer and fall. Scarlet berries remain on plant the entire winter. Plant in full exposure to the sun. 3 ft. at maturity. **PRICE: 2-yr. plants, 15-18 in., 90c each; 2 for \$1.70. 18-24 in., \$1.00 each; 2 for \$1.80, postpaid.**



Last fall I purchased two Pink Pussy Willows from you and was most pleasantly surprised to see how beautifully they were shipped and what fine plants they were. I have received many orders from several different nurseries over the years, and never have I received merchandise wrapped so very efficiently. I want to congratulate you. The plants are thriving despite our severe winter.

*Mr. Charles C. Rieth
Vandenburg Road
Canaan, N. Y.*

Lawn Trees... For Everyone



2512 EUROPEAN MOUNTAIN ASH

(*Sorbus Aucuparia*)

A very ornamental small tree, with fine bluish green, compound leaves and greenish gray bark. Freely produces creamy white flowers in flat clusters, followed by bright scarlet berries which endure for months. Use as a specimen or for accent in borders. Maturity height 25-30 ft. **PRICE: 5-6 ft., \$4.50 each.**



2524 PRUNUS NEWPORT

Small growing tree which retains its purple foliage during the summer and has small red fruits in late summer. Maturity height 12-15 ft. **PRICE: 4-5 ft., \$2.25 each; 5-6 ft., \$2.50 each.**



2515 HOPA CRAB (*Malus*)

A MASS OF COLOR

A vision of beauty with its rosy red flowers, red fruit and attractive purple foliage. Maturity height 20 ft. **PRICE: 4-5 ft., \$2.25 each; 5-6 ft., \$2.50 each.**



2507 WEEPING WILLOW

(*Salix Babylonica*)

Well known variety, excellent near water. A large, round-headed, graceful tree. Maturity height 55 feet. **PRICE: 4-5 ft., \$2.25 each; 2 for \$4.20. 5-6 ft., \$2.75 each; 2 for \$5.20.**

2508 SCHWEDLER MAPLE

(*Acer Platanoides Schwedleri*)

This attractive Maple has reddish purple foliage in early spring, changing to deep bronze. Equally good as lawn or street tree. Maturity height 40-50 ft. **PRICE: 6-8 ft., \$5.50 each.**



Famous Washington 2518 CHERRY TREES

(*Yoshino Cherry*)

These are the trees whose blooms have created so much attention all over the United States. Maturity height 25 feet. **PRICE: 3-4 ft., \$3.40 each; 4-5 ft., \$3.80 each.**

2506 CHINESE ELM

(*Ulmus Parvifolia*)

Very rapid grower, normally grows 5 feet a year. Resembles Norway Maple in shape. Excellent for windbreak. Maturity height 75 feet. **PRICE: 5-6 ft., \$2.75 each; 2 for \$5.00. 6-8 ft., \$3.25 each; 2 for \$6.00.**



2510 NORWAY MAPLE

FOR BEAUTY, SHADE AND LONG LIFE, PLANT NORWAY MAPLE
(*Acer Platanoides*)

Large, handsome, desirable for street or lawn. Most widely used shade tree. Maturity height 50 ft. **PRICE: 6-8 ft., \$5.00 each; 2 for \$9.50. 8-10 ft., \$6.00 each; 2 for \$11.50.**

2509 SILVER MAPLE

THE FASTEST GROWING MAPLE

(*Acer Saccharinum*)

Foliage bright green above, silvery beneath. Silver bark. Sugar can be made from sap. Rapid grower. Maturity height 70 ft. **PRICE: 5-6 ft., \$2.75 each; 2 for \$5.00.**

2505 LOMBARDY POPLAR

(*Populus Nigra Italica*)

Tall, spire-like, desirable for boundary lines or driveway entrances. For windbreaks—grows in most soils. **PRICE: 3½-5 ft., 75c each; 10 for \$6.50; 25 for \$15.00; 50 for \$25.00. 6-8 ft., \$1.60 each; 2 for \$3.00.**



601 RED LEAF PEACH TREE

A NEW PEACH TREE WITH FINE FRUIT AND RED FOLIAGE
A GOOD ORNAMENTAL LAWN TREE

Beautiful bright red foliage appears in the early spring and changes to deep maroon in the fall. Very deep rose blossoms contrast magnificently with the colorful foliage. The tree produces a crop of small, perfectly round Peaches about 1½ inches in diameter. The flesh is white and has a sweet flavor, the fruit over-all red color. **PRICE: 3-4 ft., \$2.00 each; 2 for \$3.45. 4-5 ft., \$2.25 each; 2 for \$3.95.**

All
Vines
Shipped
Postpaid

Vines

HARDY
CLIMBING

Nature's
Beautiful Draperies

All
Vines
2-Yr.,
No. 1



SILVER LACE VINE
2402

(*Polygonum Auberti*)
Will grow 20 feet or more. Forms clouds of lacy, misty white blooms, shot with tints of cream and pale rose. Green foliage, lightly bronzed at tips. PRICE: \$1.25 each; 2 for \$2.40, postpaid.



2404 BOSTON IVY

(*Parthenocissus Tricuspidata*)
Clings to any surface, glossy green leaves; thrives in sun or shade; rapid grower. PRICE: \$1.25 each; 3 for \$3.45, postpaid.

OTHER VINES NOT ILLUSTRATED

- 2902 **EUONYMUS RADICANS**. Evergreen vine with narrow green leaves, purple in the fall. For covering rocky banks, rough walls, tree trunks, etc. PRICE: \$1.25 each; 3 for \$3.45, postpaid.
- 2411 **SWEET AUTUMN CLEMATIS** (*Clematis Paniculata*). Rapid grower, glossy foliage. Flowers are of medium size, fragrant, pure white, borne in immense sheets in September. PRICE: \$1.25 each; 3 for \$3.45, postpaid.
- 2401 **PURPLE WISTERIA**. Grafted. Leaves are fern-like, in long fronds. Flowers appear in May or June as dense, drooping racemes a foot or more long, of pea-like florets. PRICE: \$1.75 each, postpaid.
- 2414 **TRUMPET VINE** (*Bignonia Radicans*). The bright scarlet trumpet-shaped flowers are most attractive; very good foliage. PRICE: \$1.00 each; 3 for \$2.85, postpaid.

2415—HALL'S FRAGRANT HONEYSUCKLE

(*Lonicera Japonica Halliana*)
Strong growing vine, ideal for fence, trellis, pillar, etc., and particularly good for covering banks. Fragrant yellow and white flowers. PRICE: \$1.00 each; 3 for \$2.70; 10 for \$7.95, postpaid.



2906 HICKS' YEW

(*Taxus Media Hicksi*)
Beautiful, dense, columnar form; bright red berries in the fall. Heavily sheared for specimens. For use in shady places and for foundation planting. Maturity height 5 feet.
12-15 in. \$3.50 each
15-18 in. 4.25 each
18-24 in. 5.50 each

For Free Gifts See Page 15



2909 JAPANESE YEW

(*Taxus Cuspidata*)
The aristocrat of all Evergreens. Compact, upright spreading variety; dark green foliage; scarlet berries in autumn. For use in shady areas and for foundation plantings. Can be trimmed or will grow to have 4-foot spread.
12-15 in. \$3.50 each

EVERGREENS



Juniper, Glauca Hetzi

2919 JUNIPER GLAUCA HETZI

A new low-growing, spreading evergreen with beautiful silvery blue foliage. Attractive winter and summer and is excellent for foundation plantings and in front of tall evergreens. Grows in full sun or partial shade, is hardy and thrives anywhere.

Each
15-18 in. ... \$3.50



2907 NORWAY SPRUCE

Popular Christmas tree variety; rapid grower, very hardy. Also used as windbreak. Maturity height 35 ft.
15-18 in. \$2.50 each
18-24 in. 3.00 each

NOTE: All evergreens are shipped separate from other stock.



2917 SAVIN'S JUNIPER

(*Juniperus Sabina*)
A spreading, vase-shaped shrub with handsome plume-like branches, and dark green foliage. Grows well on limestone soil. Has a 4-5 foot spread. ... Each
12-15 in. ... \$3.00

PLEASE
ORDER
BY
CATALOG
NUMBER

2915 PYRAMIDAL ARBOR-VITAE

(*Thuja Occidentalis Pyramidalis*)
A densely columnar type, compact and erect with deep green foliage. Useful for corners and on either side of doorways in foundation plantings. Maturity height 8 feet.
15-18 in. \$2.50 each
18-24 in. 3.00 each
2-3 ft. 4.00 each

2916 GLOBE ARBOR-VITAE

(*Thuja Occidentalis Globosa*)
Dwarf and globe-shaped with a 3-foot spread. Excellent for edging in foundation plantings and for "facing down."
Each
12-15 in. ... \$2.50
15-18 in. ... 3.25
18-24 in. ... 3.75



The Maloney Label
Means More for Less



Ever-blooming Roses

PRICES: 2-yr., No. 1,
Everblooming Hybrid Tea Roses:
\$1.35 each; 3 for \$3.85;
5 for \$6.00; 10 for \$10.00,
postpaid.

- (A) 3742 Poinsettia. Red.
3743 Golden Dawn. Yellow.
3744 Sterling. Pink.
- (B) 3725 Autumn. Variegated.
3745 Crimson Glory. Red.
3746 Lydia. Yellow.
- (E) 3747 Rose Marie. Pink.
- (D) 3748 Grenoble. Red.
- (C) 3749 Caledonia. White.
3750 Mrs. Du Pont. Yellow.

*For Free Gifts
See Page 15*

Climbing Roses

PRICES: 2-Yr., No. 1, Choice Plants:
\$1.35 each; 3 for \$3.85; 5 for \$6.00; 10 for \$10.80, postpaid.

- 3715 PAUL'S SCARLET. Large, vivid scarlet-red; will not fade.
3712 BLAZE. Double, dazzling scarlet; very vigorous.
3751 MARY WALLACE. The outstanding large-flowered pink climber.
3752 PRIMROSE. New, hardy climber, blooms profusely with large, canary-yellow flowers.
3716 SILVER MOON. Big saucer-shaped, moon-white flowers with yellow centers.

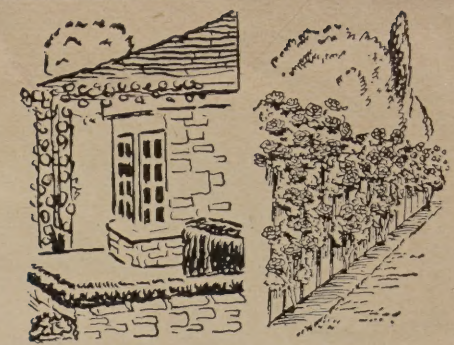


Carol Ann

- 3753 CAMEO. Myriads of delicate shell-pink and salmon flowers are a sight to behold. The lush green foliage provides a sharp and interesting contrast to the blossoms which just flower continuously. Unsurpassed in any garden.
- 3719 MOTHER'S DAY. Always full of bright cherry-red blooms creating a garden by itself. A delightful outstanding red, framed in handsome dark green foliage. The answer when you want a fine red. Very choice.
- 3754 CAROL ANN. New, double orange-salmon. Clusters of brilliant blooms create a glowing spectacle. The shiny green foliage is a rich contrast to the orange blossoms. Very free bloomer. Will bring personal satisfaction to all gardeners.

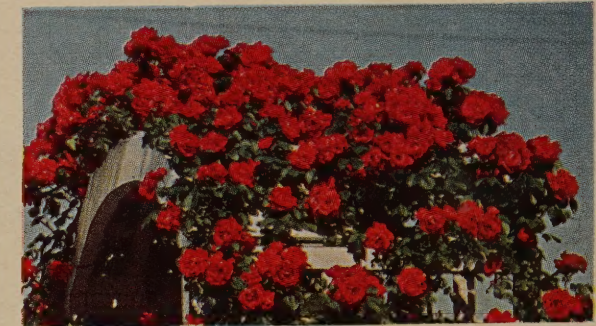
Lovely Floribundas

- 3711 RED PINOCCHIO. Pat. No. 812. Rich carmine blooms which deepen to a rich scarlet with a velvety cast. Long lasting blooms that do not fade and are delightfully fragrant. The plant is bushy, vigorous and hardy everywhere. PRICE: \$1.50 each; 3 for \$3.90, postpaid.
- 3755 FASHION. Pat. No. 789. An All-America Winner Floribunda in 1950. Fashion is coral-pink suffused with gold. The blooms persist without interruption from June until frost. The plants are vigorous, bushy, with small, glossy foliage. PRICE: \$2.00 each; 3 for \$5.25, postpaid.
- 3709 GOLDBLOCKS. Pat. No. 672. Clusters of bright yellow blooms from early spring through summer and fall. Flowers cupped in early stages and gradually open to 3 1/2 inches across. PRICE: \$1.50 each; 3 for \$3.90, postpaid.
- 3705 JIMINY CRICKET. Pat. App. For. All-America Winner for 1955. Beautiful tangerine-red buds opening to coral-orange with an old rose fragrance. A vigorous, upright grower with glossy bronze foliage turning to glossy green. It blooms all season and is excellent for cut flowers. PRICE: \$2.50 each; 3 for \$6.60, postpaid.
- 3756 MASQUERADE. Pat. No. 975. A Floribunda which is truly unique. The plant has clusters of 10 to 25 buds showing bloom of yellow, red, pink, lemon and sometimes orange. All these colors appear at once. Buds open golden yellow, with tiny vermilion marks, center bud in clusters opening first a rosy pink changing to red. PRICE: \$2.00 each; 3 for \$5.25, postpaid.
- 3710 MA PERKINS. Pat. No. 1143. Sweetly scented, beautiful coral-salmon flowers growing in clusters, as well as singly throughout the season. It is also noteworthy because of the quality of the individual flowers, as well as mass bloom. PRICE: \$2.00 each; 3 for \$5.25, postpaid.



Terraces

Fences



The Famous Paul's Scarlet Climber

THREE MOST COLORFUL POLYANTHA ROSES

- As Versatile as Perennials.
- As Brilliant as a Sunset.
- As Abundant in Bloom as the Stars.
- As Hardy as the Trees in the Woods.

PRICES: 2-Yr., No. 1, Choice Plants:
\$1.35 each; 3 for \$3.85; 5 for \$6.00;
10 for \$10.80, postpaid.

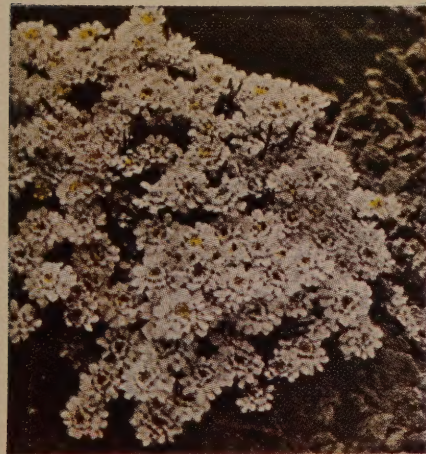
PLEASE
ORDER
BY
CATALOG
NUMBER



Fashion



General MacArthur



3542 CANDYTUFT

(*Iberis Sempervirens*)

In bloom in May with white flowers 6 inches high on very glossy green foliage. Border or rockery. **PRICE: 60c each; 3 for \$1.65, postpaid.**



Maloney's Perennials

2-Yr., Field-Grown

CHRYSANTHEMUMS

PRICE: 75c each; 3 for \$1.95, postpaid
3546 GENERAL MacARTHUR. Glowing coppery red, like shiny copper pennies. Blossoms are 2½-3 inches across. Blooms late August to frost with beautiful dark leaves; resistant to disease. Excellent for cutting. Maturity height 2½-3 ft.

3547 ALLEGRO. Very lovely, beautiful orange-salmon of an unusual shade. This will hold an exalted place among the finest. Maturity height 2-2½ ft.



3520 SHASTA DAISY

Handsome plant with large, glistening white double blossoms in June and July. Maturity height 3 ft. **PRICE: 60c each; 3 for \$1.65, postpaid.**



3545 AQUILEGIA, LONG-SPURRED

Hardy plant with large and graceful flowers, of rich, clear mixed colors. Maturity height 2½ ft. **PRICE: 60c each; 3 for \$1.65, postpaid.**

← **3543 PHLOX BLUETTE**

Deep blue blossoms with florets 1½-2 in. Large flower heads. Maturity height 18 in. **PRICE: 65c each; 3 for \$1.60, postpaid.**

For Free Gifts See Page 15

We recommend to our customers POPULAR GARDENING, America's gardening magazine, filled with gardening features and pictures, COUNTRY GENTLEMAN, jam-packed with helpful features for Better Farming and Better Living.

3544 HELIANTHUS

Large, double golden flowers in July and August, when other flowers are not plentiful. Has a Dahlia-like appearance. Maturity height 4 ft. **PRICE: 60c each; 3 for \$1.65, postpaid.**



Helianthus

PEONIES

Our Peonies are chosen for color and bloom from the best varieties. Very hardy plants that will last a lifetime.

PRICES: \$1.00 each; 3 for \$2.70; 5 for \$4.25, postpaid.

5170 FELIX CROUSSE. Brilliant crimson, large flowers, extra fine for all plantings.

5171 MOUNT EVEREST. Rounded mound of snow-white.

5172 SARAH BERNHARDT. Large, full petaled. Rose-pink.

5011 EDULIS SUPERBA. Sparkling bright pink.

5012 FESTIVA MAXIMA. White with crimson flecks.

5173 MINUET. Lovely blush-pink, very fine.



HEDGES

2205 AMUR RIVER PRIVET. (*Ligustrum Amurense*). Hardy. Of similar form to California type; safest for cold climates. 2-year, strong plants, well branched.

2206 CALIFORNIA PRIVET. (*Ligustrum Ovalifolium*). Leaves are rich green and lustrous, will remain on plant almost all winter.

Price of above varieties: 15-18 in., 10 for \$2.50; 25 for \$4.75; 50 for \$9.00; 100 for \$17.00. 18-24 in., 10 for \$3.00; 25 for \$5.50; 50 for \$10.50; 100 for \$19.95.



Amur River Privet

2201 GREEN BARBERRY

(*Berberis Thunbergi*)

Pretty plant of dwarf habit. Graceful foliage, turning to a beautiful red in the fall. Prickly, keeps dogs away. 2-year, strong plants, well branched.

	10	25	50	100
15-18 in.	\$6.50	\$15.00	\$27.50	\$50.00
18-24 in.	7.50	17.50	32.50	60.00
12-18 in.				
seedlings	2.50	5.50	10.00	18.50

2204 RED BARBERRY

(*Berberis Thunbergi Atropurpurea*)

Hedge size. Foliage bronze-red, changing to vivid orange and scarlet in fall. Red berries remain during winter.

	10	25	50	100
12-18 in.	\$4.95	\$9.95	\$18.75	\$35.00

2209 POPLAR HEDGE

Stately Lombardy Poplar trees may be kept trimmed, causing the trees to branch from the ground. When planted one foot apart will make a dense wall. **PRICE: 1-yr. plants, 2-3 ft., 10 for \$4.00; 25 for \$8.75; 50 for \$15.00.**



Red Leaf Barberry



**STANDARD
REGULAR
SIZE
5-in-1
APPLE**

28 Actually has five different kinds of Apples on one tree. You need give no special attention, just pick and pick; red and yellow, early and late. An ideal one-tree orchard that will bear bumper crops and provide useful shade. Standard trees grow to a height of about one story and are recommended for all properties. Bears in about three to six years.

VARIETIES: Baldwin, Early McIntosh, Red Rome, R. I. Greening, Yellow Transparent. (For descriptions, see standard varieties, page 13). **PRICE:** 2-yr., large, 4-6 ft., \$3.25 each.

1843 CORK BARK BURNING BUSH

(*Euonymus Alatus*)

Covered with leaves of glowing scarlet-flame in fall and ornamental red berries. A beautiful compact growing shrub with interesting corky-winged bark! Nature's most brilliant spectacle of vivid red colors! Easy to grow, thrives everywhere, perfectly hardy. Maturity height 8-10 ft. **PRICE:** 2-yr., 15-18 in., \$1.75 each, postpaid.



NOTHING FINER FOR THE GARDEN

Early bearing—heavy yielding—wonderful for pies—excellent for freezing.

BLUEBERRY COLLECTION N

3-yr., 18-24 in.

Your Choice of Varieties

4 for \$5.75

8 for \$10.40

Postpaid

No. 1 Select Plants

RASPBERRY BUSHES

PROFITABLE VARIETIES
for
Home Gardens
and
Commercial Growers



Sodus

PRICES OF ALL VARIETIES (Except as noted): 1-yr., No. 1, select plants, postpaid, 10 for \$2.75; 25 for \$4.95; 50 for \$8.50; 100 for \$14.95. Not postpaid, 250 for \$30.00; 500 for \$48.85; 1000 for \$85.00.

1607 **INDIAN SUMMER.** The wonderful ever-bearing Red Raspberry. Crop twice a year. Has very small seeds. Berries large, roundish, slightly irregular, good in quality, heavy yielder. Escapes mosaic. **PRICE: postpaid: 10 for \$2.75; 25 for \$4.95; 50 for \$8.50; 100 for \$14.95; 250 for \$30.95; Not postpaid, 500 for \$49.95; 1000 for \$95.00.**

1602 **SODUS.** Purple. Berries very large, firm and good flavor. Much more resistant to drought. Mid-July.

1606 **TAYLOR.** New Red Raspberry from New York Experiment Station. Long, conical shape; firm, thick flesh; flavor excellent. Larger than Latham and one of the heaviest bearers we have ever seen. Very early July.

1603 **SEPTEMBER.** A new Everbearing Raspberry. The red everbearing Raspberry introduced by the New York State Experiment Station. It ripens at least 2 to 4 weeks earlier than Indian Summer. The berries are of medium size, bright red, good quality. The plants are vigorous. Excellent for freezing. Escapes mosaic. **PRICE: postpaid, 12 for \$3.95; 25 for \$7.75; 50 for \$14.95; 100 for \$26.75; 250 for \$57.50. Not postpaid, 500 for \$95.00.**

1604 **LATHAM.** Large, round, rich brilliant red. A superb success in quality production and profits. Fruit clings to stem several days after fully ripe. Mosaic free. Early July.

1608 **CUMBERLAND.** Black. Berries large, firm, glossy and unsurpassed in quality. Early July.

1609 **NEW MORRISON.** New Black Raspberry. It ripens a little later than Cumberland. The color is an intense, glossy black, so attractive that these huge berries sell on sight. The fruit has almost no seeds, firm texture, yet juicy. In short, this is the most promising new Black Raspberry.



Taylor

RASPBERRY COLLECTION M

1-yr., No. 1 Plants
10 Taylor 10 Sodus

20 Plants for \$3.60, postpaid.

Cultivated Blueberries

Not Huckleberries but Large Size Genuine Cultivated Varieties—

Blueberries will grow in any good garden soil. A well drained sandy loam, acid soil is best. Muck soil may be used if it is acid and properly drained. Good air circulation is important. Common sulphur and peat moss will make soil acid.

Set the plants 4 by 10 ft. apart. Cultivate once a week. Do not fertilize until plants have been set a year or more. Use Ra-Pid-Gro fertilizer or any reliable fertilizer, following directions.

Prune plants when dormant in early spring, starting the fourth year. Remove one or two old canes each year, and lightly thin out the tops in remaining old canes. Thinning increases size of fruit. Plants in garden may be watered once a week during dry weather.

POLLENIZATION

Good productiveness is assured by planting two or more different varieties for proper pollenization.

We recommend using 1 oz. of aluminum sulphate to a gallon of water for each bush. Also, 2 lbs. of peat moss per plant.

1614 **CONCORD.** High bush, berries large, well flavored, and attractive in appearance. Midseason.

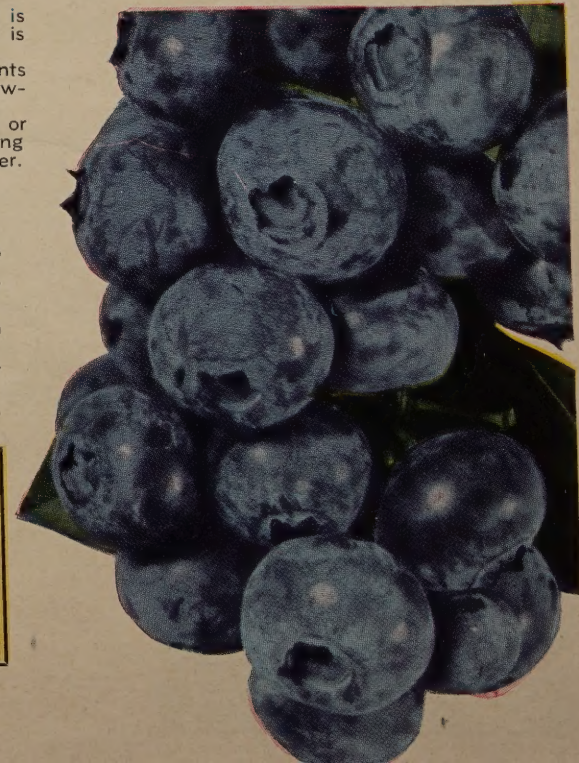
1615 **RANCOCAS.** Upright grower, vigorous, hardy; fruit very fine flavor. Fruit medium to large size. Sets very heavy crop of fruit buds. Midseason.

1616 **JERSEY.** Tall, nice shaped bush of attractive appearance. A good producer. Berries are large and of good quality. Late.

1617 **WEYMOUTH.** Plants seldom exceed 4 ft. in height and are a spreading type with dark green foliage. One of the earliest berries to ripen. Large berries with sub-acid flavor.

PRICES OF ALL BLUEBERRIES

	Post-paid Each	Post-paid 3-10	Not Post-paid 11-29	Not Post-paid 30-99	Not Post-Paid 100 or More
3-yr., 12-18 in.	\$1.40	\$1.10	\$1.05	\$0.90	\$0.85
3-yr., 18-24 in.	1.95	1.70	1.45	1.30	1.20



PROTECTION — PRIVACY — BEAUTY



Eat more fruit for better health! You'll save by growing your own

Maloney's Deluxe Flavored ORANGE-PINK APRICOTS

PRICES OF ALL VARIETIES OF APRICOTS:
Your choice of varieties, alike or assorted.

- | | | |
|--|--------|--------|
| | Each | 3 for |
| 2-yr., 4-5 ft. tall | \$2.00 | \$5.40 |
| The date after variety indicates the season during which fruit is at its best. | | |
| ✓ 1302 EARLY GOLDEN. Small, pale orange; juicy and sweet. Early August. | | |
| ✓ 1303 MOORPARK. Large; orange-red cheek; firm, juicy. Mid-August. | | |

Apricot



Maloney's Sensational Low Cost ROSA MULTIFLORA

← 2202

The protective Rosa Multiflora hedge—A thorny living fence for only a few pennies

For Country and Suburban Home Grounds

Dense Foliage—No Person or Animal Can Get Through

Grows thick, thorny, dense and will thrive in any soil. Excellent protection and attraction for song birds. Not recommended for small properties. Grows to 9 ft. in height, covered with a mass of white blossoms in the spring. Plant 1 ft. apart. **PRICE: 10-18 in., 25 for \$3.25; 50 for \$5.50; 100 for \$9.95, postpaid.**

1621 THE EBONY KING BLACKBERRY

Blackberry is large and ripens uniformly. Its ripening period is about the same as Latham Red Raspberry. The berries are borne in very large clusters and have a very sweet, true Blackberry flavor. Far superior to other Blackberries. **PRICE: 1-yr., No. 1 selected rooted cuttings, postpaid, 6 for \$1.95; 12 for \$3.75; 25 for \$7.25; 50 for \$13.50; 100 for \$21.50; 250 for \$49.95. Not postpaid, 500 for \$95.00.**

QUINCE

The Top-Notch Fruit for Jelly - Preserves

Extra Hardy—Easy to Grow

Dwarf growing. Very good baked, dried, preserved or made into jelly.

✓ 1301 ORANGE. Best commercial Quince. Large, yellow, fine quality; tree rarely fails to produce a crop. October. **PRICE: 2-yr., 4-5 ft. tall, \$2.15 each; 3 for \$5.95; 10 for \$17.50.**

For Free Gifts See Page 15

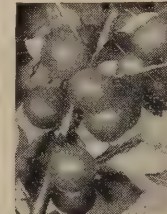
Practical Easy to Grow Garden Favorites



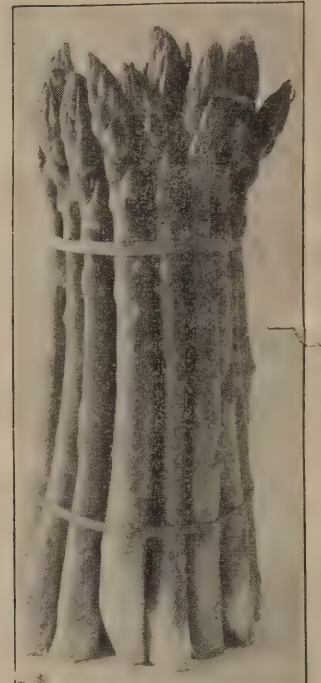
Hansen Bush Cherry

1221 HANSEN BUSH CHERRY

Colorful from spring to fall with fine gray-green foliage. Snowy white blossoms followed by deep red fruit. Quick bearing, highly productive, good flavor. Excellent for making jelly. Hardy, easy to grow and sure to produce. Makes a fruitful as well as decorative shrub. **PRICE: 2-yr., fruiting age, 75c each; 2 for \$1.45, postpaid.**



PLEASE ORDER BY CATALOG NUMBER



Asparagus

ASPARAGUS—Rust-Resistant

2300 MARY WASHINGTON, Pedigreed. Mary Washington is heavy yielding, rust resistant, and is fast replacing older varieties in home and market. It is hardy and long lived.

	2-yr., No. 1—Postpaid		Not Postpaid
25 for	\$2.25	500 for	\$18.75
50 for	3.70	1000 for	30.00
100 for	6.00		

RA-PID-GRO FERTILIZER



911 The Amazing New Discovery in Foliage Feeding

RA-PID-GRO is 100% usable by plants, it contains no inert materials, no filler. It is all usable and when dissolved in water one pound of RA-PID-GRO makes 22 gallons of liquid plant food.

RA-PID-GRO is a miracle-working concentrated food that helps nature bring out the best in your flowers, fruits, vegetables and ornamental shrubs. It contains all the elements intended plants to have plus Vitamins B.

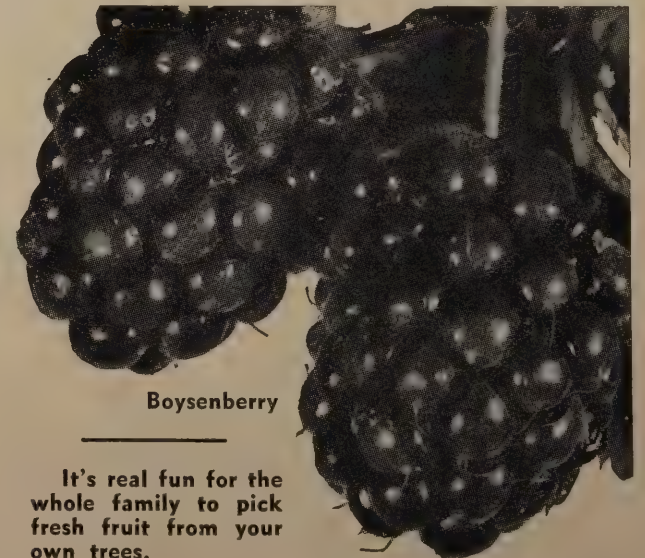
Prices Postpaid:

1 pound RA-PID-GRO	\$1.25
2 pounds RA-PID-GRO	2.35
5 pounds RA-PID-GRO	4.50
10 pounds RA-PID-GRO	8.75

1624 The Mammoth THORNLESS BOYSENBERRY

Raspberry-Flavored, Large-Berried Boysenberry
PRICE: Select plants, 3 for \$1.20; 6 for \$2.10; 10 for \$3.00; 25 for \$5.25, postpaid.

This amazing new berry has the same big, juicy, delicious fruit as the regular Boysenberry. The vines are **absolutely thornless**, making the cultivation and picking easy. They can be trained to a trellis or wire. Late July.



Boysenberry

It's real fun for the whole family to pick fresh fruit from your own trees.



Rogers
McIntosh

26 YELLOW DELICIOUS

This predominantly golden colored Apple supersedes all others for appetite appeal. It has the same unique form as the Red Delicious and is a favorite with home gardeners as well as the commercially minded grower. Juicy and fine quality. October-April.

For FREE GIFTS
See Page 15



Hale-
Haven

APPLES

Plant This Fall

MALONEY'S SHIP ONLY FRESH DUG
NORTHERN GROWN TREES FOR
FALL PLANTING

27 ROGERS RED McINTOSH

Solid red McIntosh, classed as one of the valuable new fruit introductions in years. Annual bearer. Fruit is the same size as the common McIntosh, but it is not striped. Flesh white, fine grained, very tender, juicy and refreshing. Better quality than common McIntosh and hangs better on tree. October-January.



PEACHES

624 GOLDEN JUBILEE

Introduced by the New Jersey Experimental Station. It is proving to be a real money maker. Best canning Peach of all hardy varieties. Fruit large, yellow; flesh yellow, tender, juicy and sweet. Fruit improves as the tree grows older. Late August. Freestone.

623 HALE-HAVEN

This exceptionally fine Peach is the result of crossing the marvelous J. H. Hale with South Haven. Fruit large, beautiful yellow. Flesh yellow, high quality, good shipper. Its high color even before ripening enables premature picking for distant markets. Tree is hardy, strong grower. Yields heavy crops early September. Freestone.



1011 STANLEY PRUNE

(New.) Introduced by New York Experimental Station. Large, Prune-shaped; dark blue becoming bluish black. Flesh greenish yellow, juicy, fine grained, sweet. Freestone. Mid-September.

Famous CHERRIES



1201 MONTMORENCY

—The Best of the "Sours"

The largest and best Cherries grown. Canning factories use hundreds of tons yearly. Our marvelous strain is resistant to Yellow Leaf. Fruit dark red, very firm, fine flavor, regular bearer of enormous crops, ships well and brings highest price. Excellent for pies. Mid-July. Decorative in the lawn.

See Page
13 for
Additional
Varieties
and Prices



1203 BLACK TARTARIAN

Very large, bright purplish black, tender, juicy, very rich. Tree remarkably vigorous and erect grower, and an immense bearer. One of the most popular varieties in all parts of the country. Late June.

PLUMS



1005 BRADSHAW

Very large and fine early Plum, dark violet-red, juicy and good. Very productive. Valuable for market. Late August.

See Page 13
for Additional Varieties
and Prices

If they're Northern Grown, they're HARDY

Maloney's Fine

APPLES

1. Good Stock
2. True-to-name
3. Guaranteed
4. Early to Bear
5. Disease Free
6. Best Varieties

Summer Varieties

- 2 EARLY McINTOSH. For home orchard or commercial use, this is the ideal variety to plant. Tree vigorous grower. It is a bi-annual bearer unless fruit is thinned shortly after it is set. Fruit same size, quality and flavor as McIntosh Red. Late August.
- 4 RED ASTRACHAN. A good bearer, fruit handsome, large, round, covered with deep crimson. Flesh juicy and tender. Good summer Apple. Early August.
- 5 YELLOW TRANSPARENT. Tree grows upright, hardy, early bearer. Fruit good size, skin clear, white to pale yellow. Flavor very good. Is an excellent cooking Apple, known to the housewife everywhere. Early August.

Crab Apples

- 30 DOLGO CRAB. Handsome red Crab Apple. Fruit jellies easily. Early September.
- 31 HYSLOP CRAB. Fruit large, deep crimson. Desirable for home use and market. Late September.

Winter Varieties

- 24 CORTLAND. Beautiful red Apple, larger than McIntosh. Matures a month later, excellent quality. Fine for cooking. November-March.
- 10 DOUBLE RED DELICIOUS. Solid red. Excellent quality and flavor. One of the most highly prized winter eating Apples. Everyone should have a few trees of this variety. November-April.
- 12 JONATHAN DARK RED. For eating fresh, dried, cooked, baked. Skin is rich red all over, long before ripe. Keeps all winter in storage. Better quality than common Jonathan. November-March.
- 17 RED NORTHERN SPY. Red Spy is a typical Northern Spy Apple except color. The Red Spy colors a solid bright red without either stripes or splashes. Very popular winter variety. December-March.
- 27 ROGERS McINTOSH. See illustration page 12.
- 21 TWENTY OUNCE. Very large, yellow striped red, fine quality, good keeper. October-January.
- 9 BALDWIN. Large, red, crisp, juicy. Good eating and cooking Apple. Tree vigorous and productive. December-March.
- 18 R. I. GREENING. Fruit large and handsome, smooth, dark green overspread with yellow. more highly prized for cooking than any other Apple. December-May.
- 26 YELLOW DELICIOUS. See illustration page 12.

PRICES OF STANDARD APPLE TREES

Your choice of varieties, Alike or Assorted

	1-6	7-12	13-25	26-50
	Each	Each	Each	Each
2-yr., 4 -6 ft. tall	\$2.00	\$1.85	\$1.65	\$1.45
2-yr., 3 1/2-5 ft. tall	1.60	1.50	1.30	1.10
2-yr., 3 -4 ft. tall	1.30	1.20	1.05	.90

Growers please write for special prices on quantity lots of 1-yr. and 2-yr. trees.
The dates after varieties indicate keeping season of the fruit.

World's Finest PEACHES

PEACH COLLECTION S

- 1-yr., 4-6 ft. 1 Cumberland 1 Elberta 1 Fairhaven
3 for \$3.60, Postpaid
- 602 BELLE OF GEORGIA. Large, white, red cheek. Late July. Freestone.
- 605 CUMBERLAND. A new variety introduced by the New Jersey Experimental Station. Tree is a vigorous grower and very hardy. Fruit red, flesh white. Mid-July. Freestone.
- 606 ELBERTA, EARLY. Yellow, large, good quality. Early September. Freestone.
- 623 HALE-HAVEN. See illustration page 12.
- 607 J. H. HALE. Large, yellow. Late August. Freestone.
- 617 REDHAVEN. Redhaven has the famous flavor bred into South Haven and Hale-Haven. It's a hardy variety and a big yielder. Earliest yellow freestone. Mid-Aug.
- 612 VEDETTE. The tree is productive and the fruit is large, roundish, oval, yellow fleshed. August, Freestone.

- 619 SUNHIGH. (N. J. 82.) Large, bright red all over. Large crops annually. Flesh has a tendency to adhere to pit when hard ripe.
- 620 TRIOGEM. (N. J. 70.) Deep red, highly colored Peach. Ripens just after Golden Jubilee, colors up and stays firm on tree for a week. Tree hardy and productive. Freestone.
- 622 ELBERTA. Tree hardy, disease resistant, thrifty and productive. Fruit large, oval, yellow with red cheek. Flesh yellow, firm, juicy, of high quality. Splendid shipper and keeper. Mid-September. Freestone.

PRICES OF PEACH TREES

Your Choice of Varieties, Alike or Assorted.

	1-6	7-12	13-25	26-50
	Each	Each	Each	Each
1-yr., 4-6 ft. tall	\$2.00	\$1.85	\$1.65	\$1.45
1-yr., 3-4 ft. tall	1.30	1.20	1.05	.85
1-yr., 2-3 ft. tall	1.15	1.05	.90	.75

Growers please write for special prices on quantity lots.
The dates after varieties indicate ripening season of the fruit.

- Newer Type Peaches of Merit
- 615 FAIRHAVEN. A new Peach introduced by the South Haven Experiment Station. Very heavy producer with large fruit ripening just after Golden Jubilee. Freestone.

CHERRIES-

Plant This Fall

CHERRY COLLECTION Q

2-yr., large, 4-6 ft.
1 Black Tartarian 1 Emperor Francis
1 Montmorency
3 for \$5.70, Postpaid

SOUR CHERRIES

- 1201 MONTMORENCY. See illustration page 12.
- 1214 ENGLISH MORELLO. Small round-headed tree, large dark red fruit. Good quality. Excellent for pies. July.

PRICES OF SOUR CHERRY TREES

Your Choice of Varieties, Alike or Assorted

	1-6	7-12	13-25	26-50
	Each	Each	Each	Each
2-yr., 4-6 ft. tall	\$2.40	\$2.25	\$2.10	\$1.75
2-yr., 3-4 ft. tall	2.00	1.80	1.60	1.30
2-yr., 2-3 ft. tall	1.75	1.60	1.40	1.10
1-yr., 9/16 in. 3 ft. tall and up	2.00	1.80	1.60	1.30
1-yr., 7/16 in., 2 1/2-3 ft. tall	1.75	1.60	1.40	1.10
1-yr., 5/16 in., 2-2 1/2 ft. tall	1.45	1.30	1.10	.80

Growers please write for special prices where quantity lots are desired. The dates after varieties indicate ripening season of the fruit. All 1-year trees are shipped separate from other stock.

SWEET CHERRIES

- 1206 EMPEROR FRANCIS. One of the newer Cherries of Napoleon type but better in quality. Early July.
- 1210 SCHMIDT'S BIGARREAU. The fruit is of very large size, of deep mahogany color. One of the best for sauce. Mid-July.
- 1204 NAPOLEON. (Yellow Oxheart). Fruit is large, light amber over-toned with red; used for canning and maraschino purposes. Enormous crops. Early July.
- 1211 SWEET SEPTEMBER. The fruits are an attractive dark red, similar to the Windsor, deliciously sweet; excellent for eating fresh or canning. Ripens about September 1st. PRICE: 2-yr., 5-6 ft., \$3.00 each; 5 for \$14.25. 2-yr., 4-5 ft., \$2.50 each; 5 for \$11.75, postpaid.
- 1202 WINDSOR. Fruit popular for its large size and dark color; almost black. Juicy. Late July.
- 1203 BLACK TARTARIAN. See illustration page 12.

PRICES OF SWEET CHERRY TREES

(Except as noted)
Your Choice of Varieties, Alike or Assorted

	1-6	7-12	13-25	26-50
	Each	Each	Each	Each
2-yr., 4 -6 ft. tall	\$2.65	\$2.50	\$2.40	\$2.00
2-yr., 3 1/2-5 ft. tall	2.30	2.15	1.95	1.65
2-yr., 3 -4 ft. tall	1.90	1.75	1.55	1.40
1-yr., 3 -5 ft. tall	2.30	2.15	1.95	1.65

Growers please write for special prices where quantity lots are desired. The dates after varieties indicate ripening season of the fruit. All 1-year trees are shipped separate from other stock.

INSPECTION NOTICE

All of the Apple, Pear, Plum, Sweet Cherry and 2-year Sour Cherry varieties propagated and now growing in Maloney Brothers Nursery, Dansville, New York, have been examined by the Massachusetts Truiness-to-Name Inspection Service. To the best of our knowledge, these trees are true to name as they now stand in the nursery row.
MASSACHUSETTE TRUINESS-TO-NAME INSPECTION SERVICE

For Free Gifts See Page 15

It's real fun for the whole family to pick fresh fruit from your own trees

PLUMS The Low-Headed Maloney's Strain

JAPANESE VARIETIES

- 1003 ABUNDANCE. One of the best Japanese Plums. Fruit medium size, amber with markings of red; juicy, sweet. August.
- 1004 BURBANK. Large, reddish purple skin. Early August.
- 1006 FELLEBERG PRUNE. (Italian.) The most popular commercial Prune. Valuable for dessert, market, drying or preserving. Fruit large, dark purple with blue bloom. Flesh is juicy, delicious, separating freely from the stone. Late September.
- 1008 LOMBARD. Handsome reddish Plum, flesh yellow. An excellent variety and can be relied upon for a crop when other varieties fail. Late September.

EUROPEAN VARIETIES

- 1011 STANLEY. See illustration page 12.
- 1005 BRADSHAW. See illustration page 12.
- 1010 SHROPSHIRE DAMSON. Productive, dark purple. Early October.
- 1012 YELLOW EGG. Large, golden yellow. September.

PRICES OF STANDARD PLUM TREES

Your Choice of Varieties, Alike or Assorted.

	1-6	7-12	13-25	26-50
	Each	Each	Each	Each
2-yr., 4 -6 ft. tall	\$2.40	\$2.25	\$2.10	\$1.75
2-yr., 3 1/2-5 ft. tall	2.00	1.80	1.60	1.30
2-yr., 3 -4 ft. tall	1.75	1.60	1.40	1.10

Growers please write for special low prices on quantity lots of 1-yr. and 2-yr. trees. The dates after varieties indicate the ripening season of the fruit.

PLUM COLLECTION R

2-yr., large, 4-6 ft.
1 Stanley 1 Bradshaw
2 for \$3.40 Postpaid



1504
The Sweet New
INTERLAKEN
SEEDLESS

A delicious new seedless Grape developed by the N. Y. State Experiment Station. Rich golden yellow in color. The solid, sweet, crisp flesh adheres to the skin (like California Grapes). Clusters and berries are medium in size; the quality is beyond description. Free from disease, hardy to 15 below zero, and ripens a full month ahead of Concord. **PRICE: \$1.75 each; 2 for \$3.25, postpaid.**

GRAPE VINES

Maloney's Strong Rooted Specimens

PRICES (except as noted): 2-yr., No. 1, strong vines, postpaid, 75c each; 3 for \$1.95; 10 for \$5.50. Not postpaid, 25 for \$11.25; 50 for \$17.50.

1502 CONCORD. Best commercial Grape. Bunch and berry large, juicy and sweet. Productive, excellent for Grape juice. Late September.

1503 CONCORD SEEDLESS. Same color, flavor and season as Concord but HAS NO SEEDS. Wonderful for desserts and pies. Late September. **PRICE: 2-yr. No. 1, strong vines, \$1.00 each; 3 for \$2.70, postpaid.**

1508 FREDONIA. New. The leading early black Grape. Plant is a strong, healthy grower; good clusters; berries large and juicy. Early September.

1505 CACO. Red. Large berries of highest quality. Flavor is sweet and delightful. One of the best for home use. Mid-September.

1509 NIAGARA. White. Occupies same position among white varieties as Concord among black; bunch and berries large, greenish white, changing to pale yellow when fully ripe. Late September.

1510 GOLDEN MUSCAT. Possesses a rich golden color and the fine Muscat aroma of European Muscat. Vine is vigorous, productive. The clusters are very large. The berries are large, oval, juicy, tender, sweet. Early October. **PRICE: \$1.00 each; 3 for \$2.70, postpaid.**

1511 SENECA. New. White. Outstanding. One of the best varieties for dessert. Berries large, flavor sweet and aromatic. Early September. **PRICE: \$1.00 each; 3 for \$2.70, postpaid.**

1512 BRONX SEEDLESS. Red. The best new red seedless Grape available, with large, very long clusters. Berries are large, firm, crisp and entirely seedless, of excellent quality. Productive and vigorous, ripening the latter part of September. **PRICE: \$1.25 each; 3 for \$3.25, postpaid.**

1507 DELAWARE. Red. Bunches small, compact, delicious. Extremely popular. Early Oct.

GRAPE COLLECTION L

2-yr., No. 1 vines
1 Concord 1 Delaware
1 Niagara 1 Caco
4 for \$1.60, postpaid

For Free Gifts See Page 15



1501
STEUBEN

A new creation of the New York State Experiment Station. Huge, perfectly formed, blue Grapes are produced on extremely hardy vines. The fruit is of outstanding quality, is tender and sweet and has a delicate perfume-like flavor. No spraying necessary, free from rot and mildew. **PRICE: \$1.75 each; 2 for \$3.25, postpaid.**

MALONEY'S... Practical Garden Pears



PRICES OF STANDARD PEAR TREES

Your Choice of Varieties, Alike or Assorted (Except as noted)

	1-6	7-12	13-25	26-50
	Each	Each	Each	Each
2-yr., 4 -6 ft. tall	\$2.40	\$2.25	\$2.10	\$1.75
2-yr., 3 1/2-5 ft. tall	2.00	1.80	1.60	1.30
2-yr., 3 -4 ft. tall	1.75	1.60	1.40	1.10

Growers please write for special low prices on quantity lots of 1-yr. and 2-yr. trees. The dates after varieties indicate the keeping season of the fruit.

801 BEURRE BOSCH. Large, yellow; flesh white, rich and delicious. Very popular early winter Pear. October-January.

802 CLAPP'S FAVORITE. A large, fine Pear; pale lemon-yellow with brown dots; of fine texture. Melting, buttery, juicy with delicate flavor. Tree hardy and productive. August and September.

803 KIEFFER. Large golden yellow. October-January.

804 SECKEL. Small, yellow, red cheek; juicy, excellent for canning. Mid-September.

806 BARTLETT. Large, yellow, waxy, rich and juicy; tree hardy. The best Pear for home and market. Early October.

808 NEW SEEDLESS PEAR

No Seeds—No Core
A new fruit sensation. New discovery in a seedless and coreless Pear. Resembles Bartlett in many ways, including its color. Ripens 10 days after Bartlett. Keeps well in storage and ripens evenly. **PRICE: 2-yr., 5-6 ft., \$2.50 each, not postpaid.**

PEAR COLLECTION P

2-yr., large, 4-6 ft.
1 Bartlett 1 Clapp's Favorite
2 for \$3.40, Postpaid

New DWARF CHERRY TREES

These two great new sour pie Cherries that are grown on small trees are ideal for your garden. We feel fortunate in being able to help introduce them—they are both from the University of Minnesota Fruit Breeding Farm. Try them this year and be the first in your neighborhood.



1215 NORTHSTAR

At last a small sized sour Cherry tree that is delicious for pies. This is a cross between the Siberian Cherry and English Morello. It is very hardy and good quality. The fruit is bright red changing to mahogany-red. Flesh is tender, juicy and meaty. Season July 5th to 10th. It is self fruitful. **PRICE: 2-3 ft., \$3.00 each; 2 for \$5.75.**

1216 METEOR

Also a small sized sour Cherry tree of the Montmorcency type and an excellent Cherry. The fruit is large, the flavor is pleasant and the quality good. Ripens about ten days to two weeks later than Northstar. Self fruitful. **PRICE: 2-3 ft., \$3.00 each; 2 for \$5.75.**



MALONEY'S

FREE GIFTS For Ordering Early!

THESE VALUABLE GIFTS ARE FREE! You can have them, at no cost to you, if you will send your nursery order to us by October 24. You see, when orders are sent to us early, it is easier for us to give better selections and plan for shipment at just the right time for planting. This is all you have to do:

- On nursery orders of \$5.00 to \$10.00, select one of the 10 free gifts.
- On orders of \$10.00 to \$20.00, select two gifts, alike or different.
- On orders of \$20.00 to \$30.00, select three gifts, alike or different.
- On orders of \$30.00 or more, select four gifts, alike or different.

YOU MAY SELECT GIFTS AS FOLLOWS:

- | | |
|---|--|
| <ul style="list-style-type: none"> A. 15 Assorted Holland Tulips, our regular mixture of top size bulbs. B. 25 Crocus bulbs, our regular mixture including all colors. C. 1 beautiful 2-yr., No. 1 shrub, your choice of one of the following: Deutzia, Pride of Rochester; Honeysuckle rubra; Tamarix africana; worth \$1.15. D. 1 Blueberry plant 12/18"; your choice of variety; worth \$1.40. | <ul style="list-style-type: none"> E. 5 Lombardy hedge plants, worth \$2.00. F. 12 Multiflora Rose bushes No. 1, worth \$2.25. G. 1 Hardy Holly shrub 18/24", worth \$1.50. H. 2 Grape Vines, 2-yr. No. 1 standard varieties, worth \$1.50. I. 1 Fragrant Honeysuckle Vine, worth \$1.00. J. 2 Hansen Bush Cherry, worth \$1.45. |
|---|--|

Gifts must be taken as nursery stock and NOT as a cash deduction. Your selection of gifts MUST BE WRITTEN ON YOUR ORDER or the gifts will not be sent, even if you notify us later. We reserve the privilege of substituting different gifts of equal or greater value should we run short of some items. **Free Gift Expires October 24.**

PLANT This FALL!

- Leading horticulturists recommend it.
- Ideal planting time—a few reasons are:
- Stock will make root growth during the warm period in winter.
- All stock is freshly dug.
- Everything planted in fall becomes well established by spring and starts faster than spring planted stock.

Maloney's Mushrooms GROW YOUR OWN

2306 MALONEY'S MAGIC MUSHROOM TRAYS are pre-planted Mushroom beds set in portable wooden flats all ready to grow. In your basement or storage cellar, you can have Mushrooms in two to three weeks with a continuous yield for two to four months. Ready to pick when you want them.

They are safe. Compost is pasteurized. Will grow in any cool place. Ideal temperature is 52 to 65 degrees. Magic Mushroom Trays are shipped upon order from October 15 to April 15. **PRICES: Shipped to you by express (not prepaid) from our grower in Ohio.**

- | | |
|-----------------|--------|
| 3 "Magic" Trays | \$4.65 |
| 6 "Magic" Trays | 7.80 |

Each tray measures 14X17 inches in size. The shipping weight is 25 pounds per tray with soil. Without soil 15 lbs. We suggest shipping without soil in the fall. Please specify if trays are to be shipped **with** or **without** soil.



The Maloney Label Means More for Less

INDEX

Page No.	Page No.
Apple, 5-N-1, std. and dwf. 10, 16	Hedges 8, 9
Apple trees, std. 10	Hyacinths 2
Apple trees dwf. 16	Locust, Moraine 3
Apricot trees 11	Maple 3, 6
Ash, European Mt. 6	Mushrooms 15
Asparagus 11	Peach trees 13
Barberry 3, 7	Pear trees 14
Bittersweet 3	Peonies 9
Blackberries 11	Perennials 9
Blueberries 10	Pink Deutzia 3
Boysenberries 11	Plums 13
Chestnuts 16	Poplar 6, 9
Cherry trees, std. 13	Privet 7
Cherry trees, dwf. 14	Quince 11
Crocus 2	Ra-Pid-Gro 11
Daffodils 2	Raspberries 10
Elm, Chinese 6	Red Emperor Tulip 16
Evergreens 7	Roses 8, 11
Free gifts 15	Shrubs 4, 5
Grapes 14	Tulips 1, 2, 16
	Vines 7
	Weeping Willow 6



BUY BY MAIL!

It's Easy to Order

Buying at Maloney's by mail is convenient and economical. Yes! You can do all your shopping for the city, farm or suburban home, leisurely any time you wish from your easy chair in the comfort of the home. Please fill in all the columns, using our convenient order sheet and envelope accompanying this catalog (no postage required). We sell only selected stock grown by our experienced men. True-to-name, Maloney northern grown hardy nursery stock guarantees success.

HOW TO ORDER

TERMS: Cash with order is required or stock will be shipped C.O.D.
C.O.D. Send 25% of total price with C.O.D. orders. Pay balance on arrival to your express agent or (if freight) to your freight agent.
HOW TO REMIT: By personal check, express money order, post office money order, bank draft, or cash in a registered letter. **Please do not send stamps.**
SHIPPING SEASON: We ship at the time best suited to your locality, usually October 15th to November 30th. Perennials and evergreens are shipped starting October 1st. This catalog cancels any prices prior to now.
WARRANTY: No caution is more exacting than ours. We will with proper proof, replace free all trees, etc., that may prove untrue to label or refund the price paid. We give no further warranty.

Maloney's GUARANTEE

We **guarantee** to deliver stock in good condition, up to grade and specifications. If your order arrives in damaged condition, report immediately to carrier and to us. We will correct errors promptly or refund your money. **We replace free of charge** any plant that fails to grow, provided you carefully follow our planting instructions, and that you report on its condition before August 1st on shipments made the previous fall or spring. Please return your original order sheet when writing.

INSPECTION. Our nurseries are inspected yearly by an authorized State Inspector and a copy of our certificate received from the Department of Agriculture and Markets, Albany, N. Y., accompanies each shipment.

OUR REFERENCES: Security Trust Co., Dansville Branch; Genesee Valley National Bank & Trust Co., Genesee, N. Y.; Dun & Bradstreet Commercial Agency, New York City.

SIZE OF ORDERS. We cannot accept orders for less than \$2.00 under prevailing conditions.

WE PAY POSTAGE. Many items in this catalog are delivered to your door postpaid. Items that are too large to go by parcel post are sent to you by express, and you pay the express charges. Where there is a mixed order of postpaid and express items, we ship the whole order express, prepaying in advance our portion of the charges. **NOT POSTPAID INTO CANADA.**

We are members of the American Association of Nurserymen, New York State Nurserymen's Association and the National Mail Order Nurserymen's Association.

MALONEY BROS.

NURSERY CO., Inc.

Dansville, New York

Established 1884



MALONEY'S Dwarf 5-in-1 Apple

8008—Now because of special grafting you can have five different kinds of Apples all growing on one tree which will never grow higher than you can reach! Imagine the thrill of picking five different Apples from the one tree! Great big, regular size fruit from a one-tree orchard. Ideal where space is limited for you get five-on-one.



Fruit all the time and no more ladders, long pruning poles or high pressure sprayers. Bears fruit in two to four years. **VARIETIES:** Cortland, Double Red Delicious, Northern Spy, Yellow Delicious, Yellow Transparent. (For descriptions, see standard varieties, page 13). **PRICE:** 2-yr., large, 3-4 ft., \$4.75 each.

For Free Gifts See Page 15

FULL SIZE FRUIT on Dwarf or Standard TREES

SPECTACULAR GIANT



The World's
Largest
Earliest Tulip



5124

Red Emperor

King of the Tulips

Enjoy the world's earliest, largest, most vivid red Tulip with blooms measuring 9 in. across on sturdy, 15-inch stems. Certainly a royal member of the Tulip kingdom both in size and beauty. Now at Maloney's new low price you can afford to plant liberally for a more delightful garden next spring. **PRICE:** 10 for \$1.20; 25 for \$2.75; 50 for \$4.95; 100 for \$9.00, postpaid.

DWARF FRUIT TREES



Rogers McIntosh

Bear FULL SIZED FRUITS

DWARF APPLE

These trees are not new with us. Several years ago we started growing them from Malling stock secured from N. Y. State Experiment Station. We offered them for sale, the first of their kind sold in the United States. They are without question the "perfect" trees for the lawn or garden. Plant them so that the BUD UNION IS AT LEAST TWO INCHES ABOVE THE GROUND. Maturity height 6-12 ft. Plant 15 ft. apart. **PRICE:** 2-yr., large, 4-5 ft., \$3.25 each; 3 for \$9.00; 6 for \$16.50. 2-yr., 3-4 ft., \$2.75 each; 3 for \$7.50; 6 for \$13.50.

We can furnish the following varieties in full or semi-dwarf which mature at 6 and 12 ft. respectively.

8000 CORTLAND	8005 RED ROME
8001 DOUBLE RED DELICIOUS	8006 YELLOW DELICIOUS
8010 EARLY McINTOSH	8007 YELLOW TRANSPARENT
8002 RED ASTRACHAN	8014 NORTHERN SPY
8012 R. I. GREENING	
8004 ROGERS McINTOSH	

(For description see standard varieties, page 13)

DWARF PEAR

Dwarf Pear trees are also a very valuable addition to any lawn or garden. Like the Apple, it is a low growing tree. Fruit is easily accessible from the ground and the fruit is large standard size. Approximately 15 ft. at maturity. Plant 12 feet apart. **PRICE:** 2-yr., large, 3-4 ft., \$3.25 each; 3 for \$9.00; 6 for \$16.50. 2-yr., 2½-3 ft., \$2.75 each; 3 for \$7.50; 6 for \$13.50.

We can furnish the following varieties:

8076 BARTLETT	8078 DUCHESS
8077 CLAPP'S FAVORITE	8079 SECKEL

(For description see standard varieties, page 14)

Eat more fruit for better health!
You'll save by growing your own

7005 Hardy Disease Resistant Chestnuts

New Type



The Highly Prized Sweet Chestnuts Gathered Each Fall

Gone are the famous American Chestnuts of yesteryear and in their place comes the New Chinese Chestnut. Now highly disease resistant and extremely hardy for Northern climate. Thanks to our U. S. Department of Agriculture.

Unsurpassed as a decorative lawn tree, it grows tall, providing plenty of shade in the home grounds, besides yielding an annual crop of the finest sweet Chestnuts so loved by everyone. Better crops are insured by planting two or more trees for pollenization. **Get your order in early. PRICE:** 18-24 in., \$2.25 each. 2-3 ft., \$2.60 each. 3-4 ft., \$3.25 each.